

2019

ANNUAL REPORT



ON BEHALF OF THE BOARD OF DIRECTORS AND CHIEF EXECUTIVE OFFICER, we are pleased to present you with the Sacramento Native American Health Center's (SNAHC) 2019 annual report. Throughout 2019, we made great strides as we continued to advance our legacy of excellent patient care through our re-accreditation from the Accreditation Association for Ambulatory Health Care (AAAHC) and our recertification as a Patient-Centered Health Home (PCHH). These two milestones marked our commitment to providing the highest quality of culturally appropriate care in our region. As a leader in Urban Indian Health and as a Community Health Center, we are proud of the PCHH accolade, and we have continuously reaffirmed that the patient is at the center of all that we do.

CARE. COMMUNITY. CULTURE. SNAHC is more than just a health center. We are a health home filled with opportunity; a place to create community for those who might feel disconnected; a place to learn, grow and change; and a place to recommit to health and wellbeing. SNAHC is a place to connect and belong.

We met the challenges that faced us in 2019 with determination and resolve. We honored our history and celebrated new accomplishments, while remaining steadfast in our commitment to provide high-quality, integrated primary care for our community.

We are excited for what is to come and look forward to expanding our services to meet the growing needs of our ever-expanding community. We are honored to have you as a partner in wellness as we work toward California's vision of "Health Care for All".

THANK YOU FOR YOUR CONTINUED SUPPORT,

Britta Guerrero

BRITTA GUERRERO
San Carlos Apache
Chief Executive Officer

Mary Tarango

MARY TARANGO
Wilton Band of Miwok
Board Chair

SPECIAL THANKS



@SNAHC



@SACNAHC



@SACNAHC



SACRAMENTO NATIVE AMERICAN HEALTH CENTER, INC.

2020 J STREET • SACRAMENTO, CA 95811
(916) 341-0575 • SNAHC.ORG



ALL ARE WELCOME

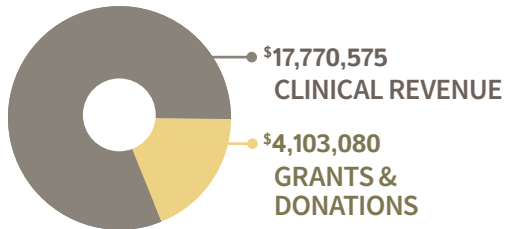
FINANCIALS

IN 2019, SNAHC WAS RECOGNIZED AS A TOP 10 FASTEST GROWING COMPANY by the Sacramento Business Journal, the only non-profit to receive this honor. Our 2019 operating budget was over \$21,000,000, with almost 20% of the revenue coming from grants and donations.

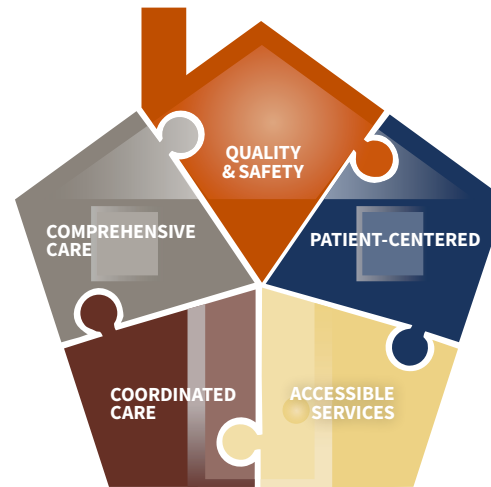
OPERATING BUDGET

2019	\$21,873,655
2018	\$20,110,195
2017	\$14,343,026

2019 REVENUE

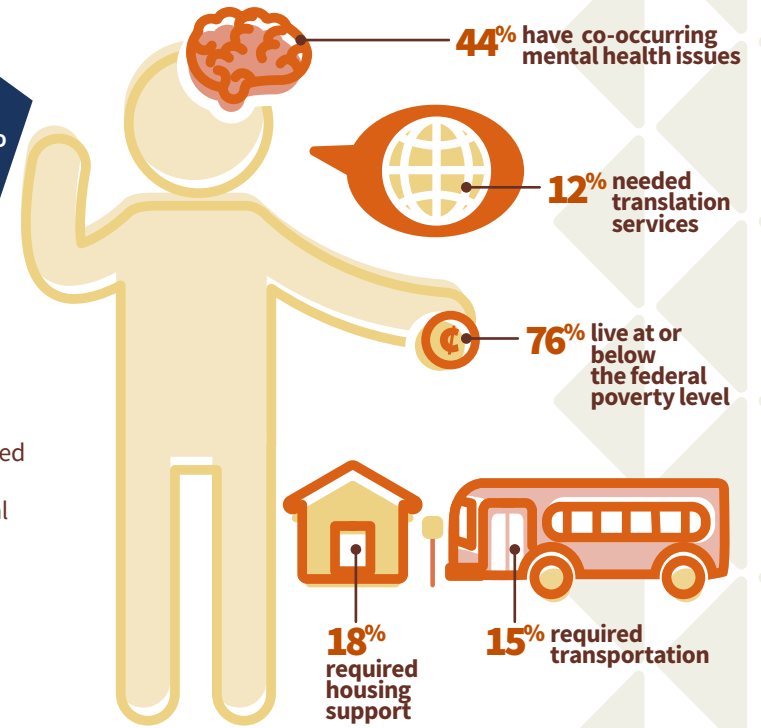


OUR HEALTH HOME



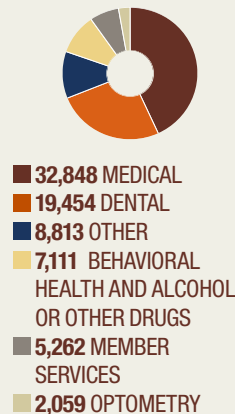
- 59% of patients are empaneled to a **Primary Care Provider**.
- 37% of patients are seen in **more than one department**.
- 58% of patients **needed a referral** to outside care, for a total of **23,251 referrals**.
- 416 unique patients attended **1,508 classes**.
- 2,200 residential treatment **bed days** were sponsored.

11,825 PATIENTS AND 75,547 VISITS

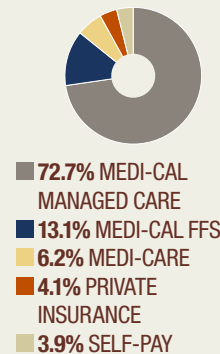


SNAHC COULD NOT DO THIS GREAT WORK WITHOUT THE SUPPORT OF MANY ORGANIZATIONS AND COMMUNITY MEMBERS. Partnerships span many service sectors and help us to provide co-located services with referral agreements, funding, and much more. Thank you for your partnership.

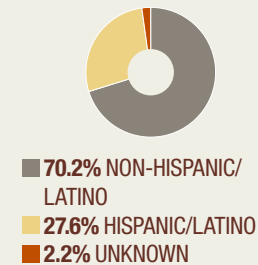
PATIENT VISITS



PRIMARY INSURANCE



ETHNICITY



RACE

